



h•t°

**Rob Hotchkiss**  
Freelance Design & Art Direction  
T/A Hot Creative

**SAMPLE PORTFOLIO**

PR Morson



British Independent Utilities (BIU)



Hot Creative



teesloth



Electric Vehicle Group (EVG)



SUP's UP





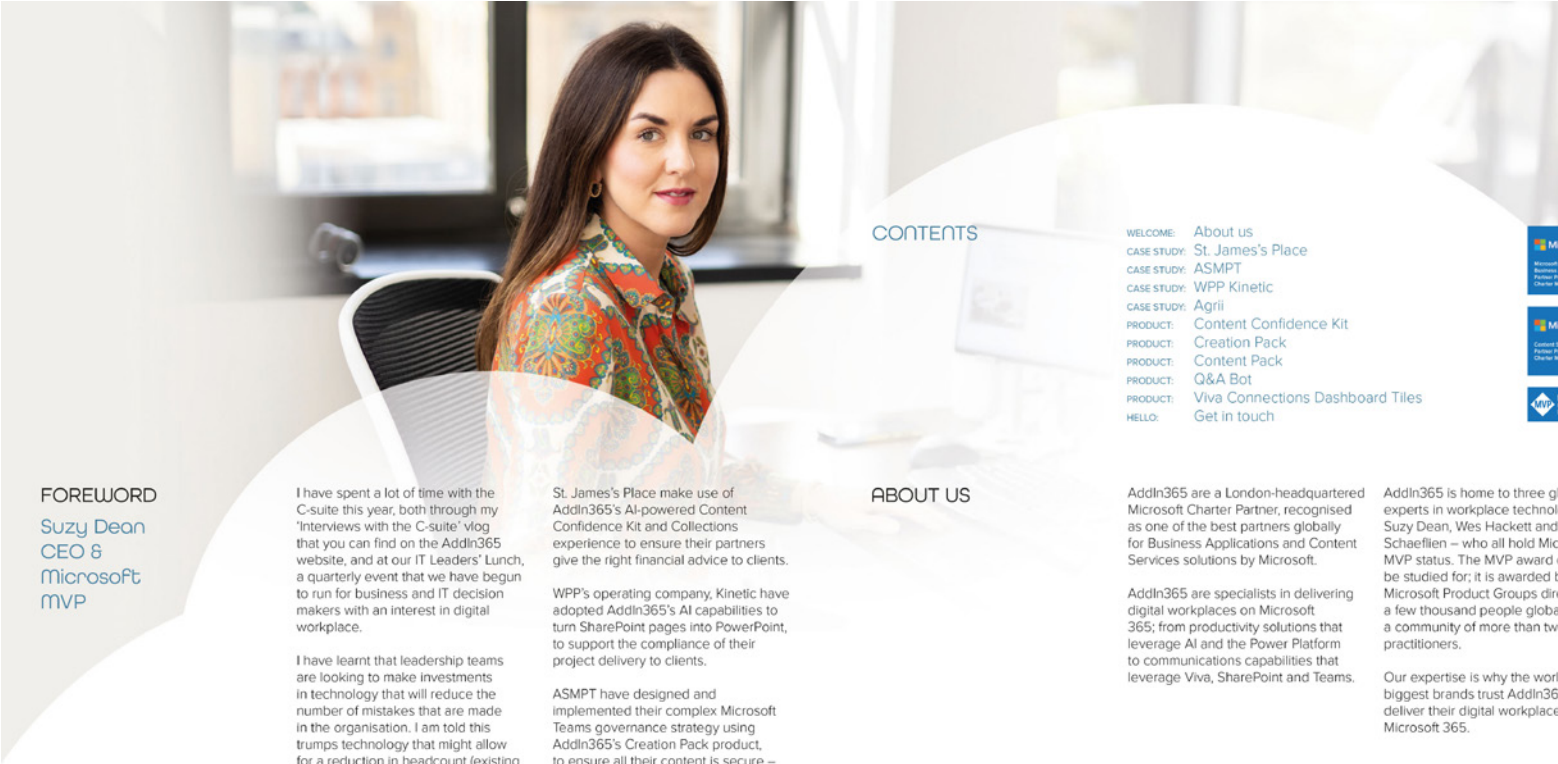
**ENVIRONMENTAL  
JUSTICE FOUNDATION**

**ENVIRONMENTAL  
JUSTICE FOUNDATION**



**PROTECTING  
PEOPLE & PLANET**





FOREWORD  
Suzy Dean  
CEO of  
Microsoft  
MVP

I have spent a lot of time with the C-suite this year, both through my 'Interviews with the C-suite' vlog that you can find on the AddIn365 website, and at our IT Leaders' Lunch, a quarterly event that we have begun to run for business and IT decision makers with an interest in digital workplace.

I have learnt that leadership teams are looking to make investments in technology that will reduce the number of mistakes that are made in the organisation. I am told this trumps technology that might allow for a reduction in headcount (existing headcount is priced into budgets already unless cuts have to be made) and is more important than return on investment. How can that be? In short, mistakes cost money and that directly impacts profitability.

Which leads me on to the focus for this year's brochure. AI is everywhere since the launch of ChatGPT at the end of 2022, with many CIOs asking what it's for. Our 2024 edition focuses on four stories that explain how AI has been

St James's Place make use of AddIn365's AI-powered Content Confidence Kit and Collections experience to ensure their partners give the right financial advice to clients.

WPP's operating company, Kinetic have adopted AddIn365's AI capabilities to turn SharePoint pages into PowerPoint, to support the compliance of their project delivery to clients.

ASMP have designed and implemented their complex Microsoft Teams governance strategy using AddIn365's Creation Pack product, to ensure all their content is secure – including that of their global R&D teams who design and iterate their multi-billion dollar products. The Creation Pack uses AI to apply the right governance to Microsoft Teams without the need for employee action.

Agrii are using AddIn365's AI Viva Connections Dashboard Tiles to deliver dynamic job guides to agronomists that are literally out in fields, advising farmers on crops appropriate to the

CONTENTS

WELCOME:	About us
CASE STUDY:	St James's Place
CASE STUDY:	ASMP
CASE STUDY:	WPP Kinetic
CASE STUDY:	Agrii
PRODUCT:	Content Confidence Kit
PRODUCT:	Creation Pack
PRODUCT:	Q&A Bot
PRODUCT:	Viva Connections Dashboard Tiles
HELLO:	Get in touch

ABOUT US

AddIn365 are a London-headquartered Microsoft Charter Partner, recognised as one of the best partners globally for Business Applications and Content Services solutions by Microsoft.

AddIn365 are specialists in delivering digital workplaces on Microsoft 365; from productivity solutions that leverage AI and the Power Platform to communications capabilities that leverage Viva, SharePoint and Teams.

AddIn365 is home to three global experts in workplace technology: Suzy Dean, Wes Hackett and Paul Schaeffgen – who all hold Microsoft MVP status. The MVP award can be studied for; it is awarded by Microsoft Product Groups directly to a few thousand people globally, a community of more than two million practitioners.

Our expertise is why the world's biggest brands trust AddIn365 to deliver their digital workplaces on Microsoft 365.

OUR CLIENTS INCLUDE:



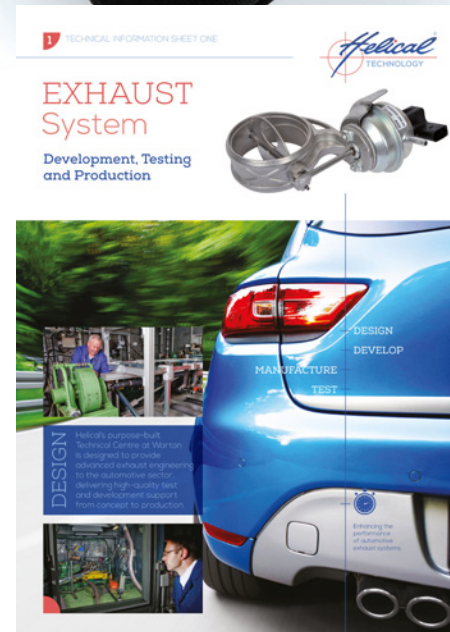
AddIn365  
The Curtain Theatre  
Helical Technology  
Carl Lewis Films



Guests will enjoy a lunch, as well as a deliver ROI in the d

SCOTT  
20 Mount Street Lo

We look forward to  
Please email harrie  
if you have any que





## Advertising design

Fylde Private GP  
Teesloth Clothing  
AddIn365  
Sauermann UK  
Mezzo Magic Yachts



**FYLDE PRIVATE GP**

Live happier  
Live healthier  
Live better

Register free now to access  
our opening patient list  
Monthly memberships plan  
and pay as you go available  
Opening Summer 2021  
fyldeprivategp.com  
0333 241 6441



ethically-made | eco-friendly | 100% organic

**Threads with  
conscience**

tees for everyday chillin'

**teesloth**



Deliver automation,  
productivity and  
personalisation  
across your  
digital workplace  
in Microsoft 365  
with powerful  
AI solutions

Get started:

**Supercharge  
your digital  
workplace  
with**

**AddIn365**

+44 (0)20 3859 6809  
hello@addin365.com  
www.addin365.com

Microsoft AddIn365



**sauermann**

Don't be a lime,  
choose the only  
replacement pump  
you'll ever need

Get out of a corner quicker  
... and easier ... and cheaper ...

We've got 5 sets of SI-RM3 smart wireless manifold probes to giveaway, let  
us know you made the #SauermannSwitch and be in with a chance to WIN!

Sauermann UK  
Trent Road, Loughborough  
Leicestershire LE11 1JH  
Tel: 01452 253 3400/10  
Fax: 01452 253 3400/11  
Email: info@sauermann.co.uk

www.sauermann.co.uk  
#SauermannSwitch



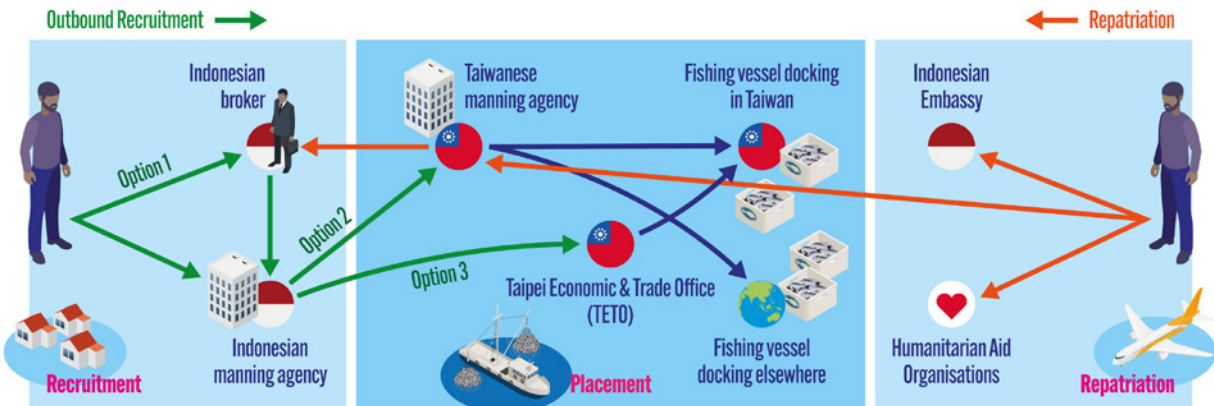
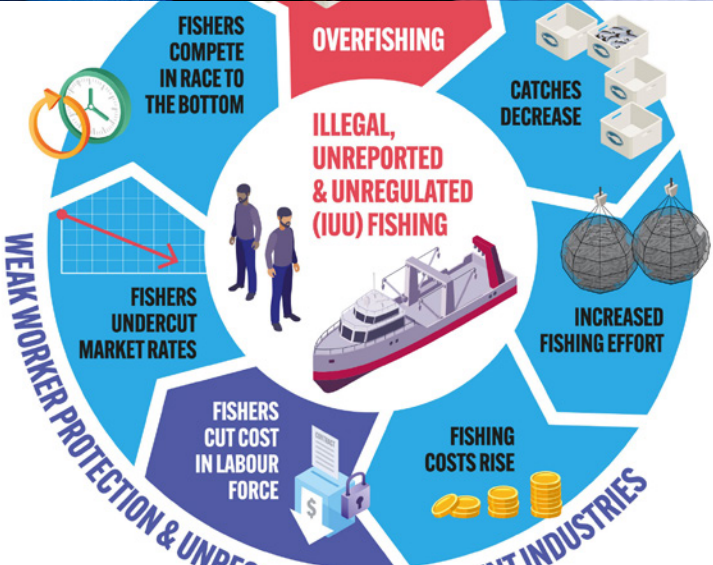
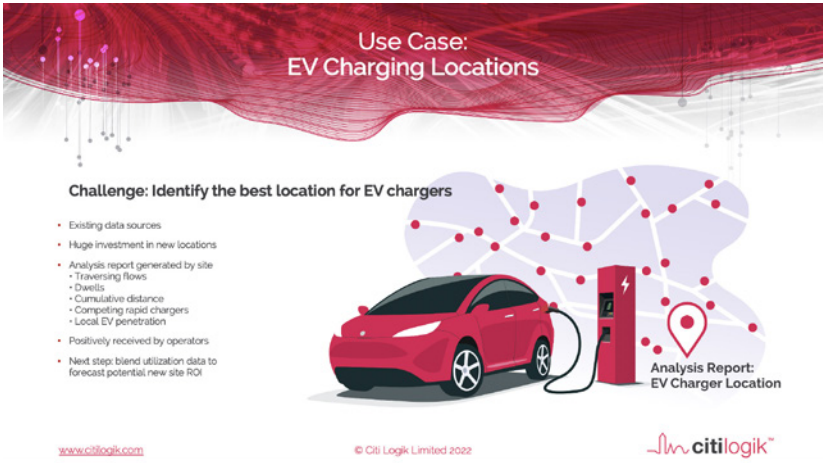
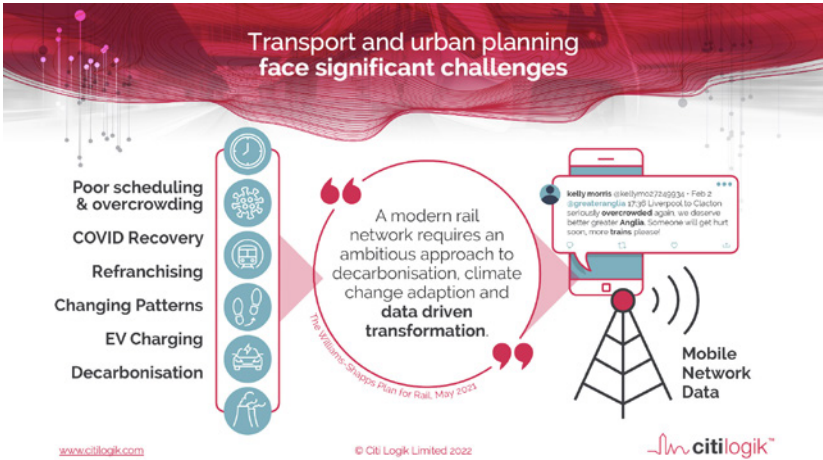
Port de Sóller, Mallorca

**Luxury Chartered Yachts**  
Tailored to *your* dreams

**MEZZO MAGIC**.co.uk  
Part of Perfect Charter

+34 971 942 173



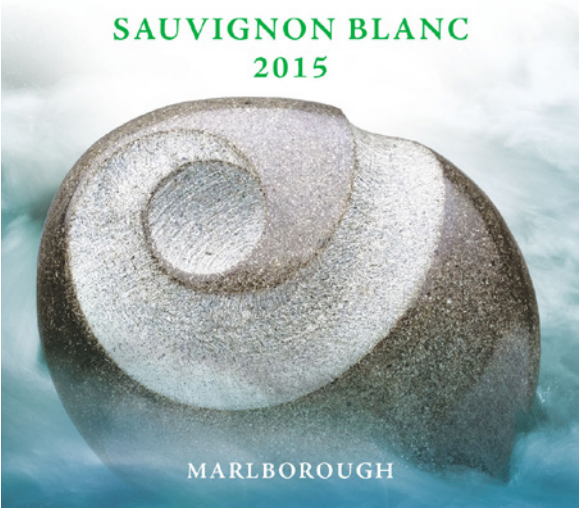






GREY ROCK

SAUVIGNON BLANC  
2015



MARLBOROUGH





Online digital media design

Corbenyah  
OLSOTS Primary School  
World Cancer Day



Greg Savage famously said,  
"Hire an attitude,  
not just experience and qualification."



We think he made a good point.

You might be a candidate looking for a new career or an employer seeking the very best talent available. Whichever may apply, we work hand in hand to ensure the best match possible for both parties.

The team at Core Resource understands that candidates will naturally want the best experience and that employers will naturally want the best engagement. Core Resource is the fulcrum between the two.

Expertise yielded from many years' experience working within & recruiting for the Energy, Legal and Financial sectors.



ENERGY

Core Resource works directly with suppliers, intermediaries and corporations at the forefront of the UK energy industry.

Our experience in the sector is unparalleled.

Whether you are seeking careers in or looking for people to provide Business Development, Compliance & Carbon Management, Validation, Reporting or Trading, we can help.



LEGAL

Core Resource assists candidates and legal firms alike in career placement or talent acquisition by specialism. Commercial law, para-legal, solicitors & litigation executives are some examples.

We also understand the importance of echoing our customers values, when profiling in such an area of expertise.



FINANCE

From CFO to credit control & accountancy. Our in-depth knowledge of all roles, administrative, executive and board level allows us to match the most attractive opportunities with the best people available.

Sign up today and let us get to the core of your recruitment needs, wants and aspirations.

Full Name   
Email   
Number

"I am convinced that although training and development are important, recruitment and selection are much more important."

Stephen R Covey